

# PLASTIC PALLET 760 X 1140 OPEN DECK 9 FEET LIGHT

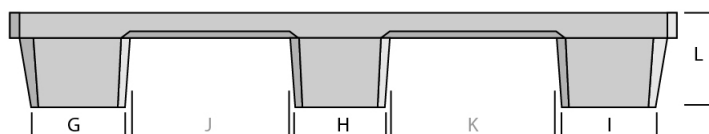
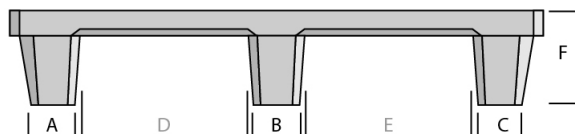
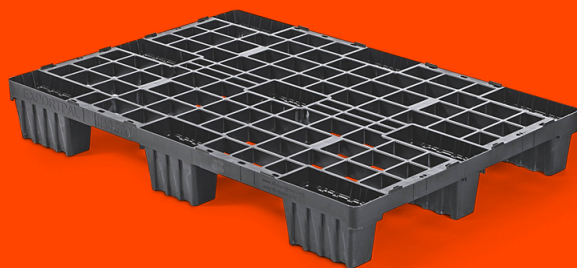
**QP76114LB9FR**



LIGHT



PE-HD



## GENERAL

|                  |          |
|------------------|----------|
| Dimensions (mm): | 760x1140 |
| Length (mm)      | 1140     |
| Width (mm)       | 760      |
| Height (mm):     | 150      |
| Weight (kg):     | 4,0      |
| Static (kg):     | 2500     |
| Dynamic(kg):     | 1000     |
| Racking (kg):    | 0        |
| Bottom:          | 9 feet   |
| Upper deck:      | open     |

## DIMENSIONS

|   |   |   |   |   |   |
|---|---|---|---|---|---|
| A | B | C | D | E | F |
| G | H | I | J | K | L |

## DISCLAIMERS

- ☒ Racking load conversion protocol based on 25kg bags test.
- ☒ Tolerance deviation in the size of the plastic pallet +5 / -5 mm. Tolerance deviation in the weight of the plastic pallet +5 / -5 %.
- ☒ The load performance (static dynamic and racking) are determined under a evenly divided load.

**PALLETS WITH  
A PURPOSE**



Download Now

**Q-PALL BV**  
Edisonweg 9  
5466 AR Veghel  
Nederland  
+31 413 353 111  
info@qpall.com  
www.qpall.com

**Q-PALL®**  
PLASTIC PALLETS