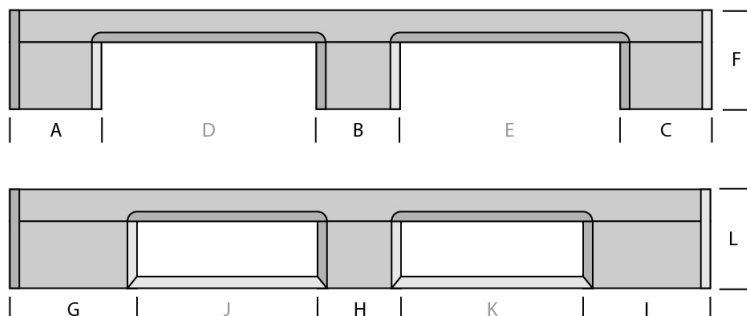
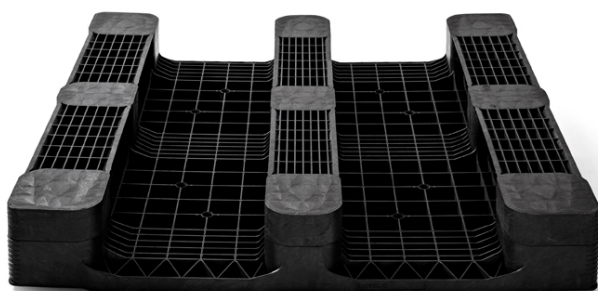
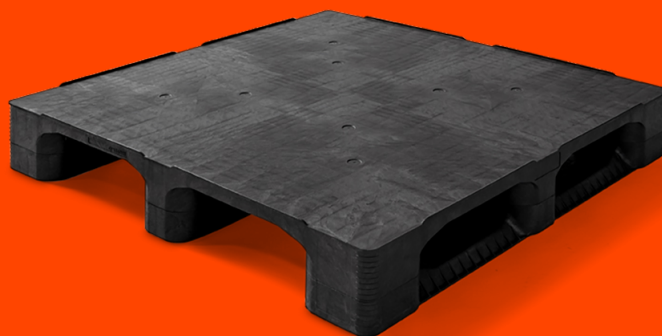


PLASTIC PALLET 1140 X 1140 CLOSED DECK 3 RUNNERS HEAVY

QP1140HB3RR-CD



GENERAL

Dimensions (mm):	1140x1140
Length (mm)	1140
Width (mm)	1140
Height (mm):	165
Weight (kg):	24,0
Static (kg):	7500
Dynamic(kg):	2000
Racking (kg):	1250
Bottom:	3 runners
Upper deck:	closed

DIMENSIONS

A	B	C	D	E	F
180	150	180	315	315	165
G	H	I	J	K	L
180	150	180	315	315	165

DISCLAIMERS

- ☒ Racking load conversion protocol based on 25kg bags test.
- ☒ Tolerance deviation in the size of the plastic pallet +5 / -5 mm.
Tolerance deviation in the weight of the plastic pallet +5 / -5 %.
- ☒ The load performance (static dynamic and racking) are determined under a evenly divided load.



**PALLETS WITH
A PURPOSE**

Download Now

Q-PALL BV
Edisonweg 9
5466 AR Veghel
Nederland
+31 413 353 111
info@qpall.com
www.qpall.com

Q-PALL®
PLASTIC PALLETS