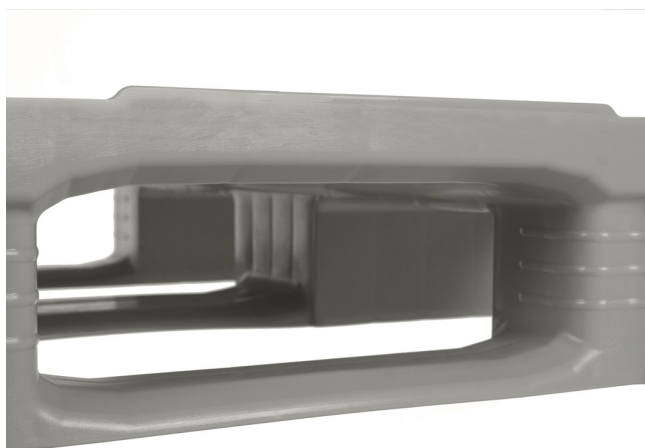


HYGIENIC PALLET 1200 X 800 CLOSED 3 RUNNERS HEAVY STEEL-REINFORCED

QPH1208HP3RR-CDGR



GENERAL

Dimensions (mm):	1200 x 800
Height (mm):	160
Weight (kg):	18
Static (kg):	7500
Dynamic(kg):	1500
Racking (kg):	1750
Bottom:	3 runners
Upper deck:	closed

**PALLETS WITH
A PURPOSE**



Download Now

Q-PALL BV
Edisonweg 9
5466 AR Veghel
Nederland
+31 413 353 111
info@qpall.com
www.qpall.com

Q-PALL®
PLASTIC PALLETS